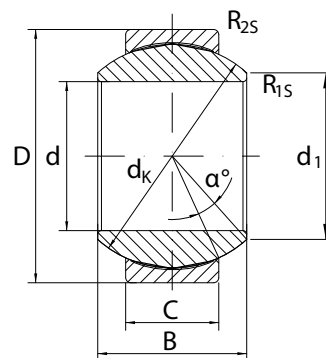


GE..FW

GE..FW

GE..FW



Underhållsfritt ledlager med yttering av stål där glidytan är belagd med PTFE. Innerring av hårdförokromat stål. Bredare innerring och större ytterdiameter.

Huoltovapaa laakeri. Ulkoreenkaan liukupinta PTFE-komposiittia. Sisärenas karkaistua terästä. Leveämpi sisärenas sekä suurempi ulkohalkaisija.

Maintenance-free Spherical Plain Bearing with outer ring of steel and the sliding surface coated with PTFE composite material. Inner ring of hard chromed plated steel. Wider inner ring and larger outer diameter.

| Benämning/Nimitys/Type | Dimensions mm | | | | | | | | | Load ratings kN | |
|------------------------|---------------|----|----|----|-----------------------|----------------|------------------------|------------------------|--------|-----------------|-------------------------|
| | d | D | B | C | d ₁ min | d _k | R _{1S} min | R _{2S} min | a ° | dyn. C | stat. C ₀ |
| GE 06 FW | 6 | 16 | 9 | 5 | 9 | 13 | 0.3 | 0.3 | 21 | 5.8 | 14 |
| GE 08 FW | 8 | 19 | 11 | 6 | 11 | 16 | 0.3 | 0.3 | 21 | 8.6 | 21 |
| GE 10 FW | 10 | 22 | 12 | 7 | 13 | 18 | 0.3 | 0.3 | 18 | 11 | 28 |
| GE 12 FW | 12 | 26 | 15 | 9 | 16 | 22 | 0.3 | 0.3 | 18 | 18 | 45 |
| GE 15 FW | 15 | 30 | 16 | 10 | 19 | 25 | 0.3 | 0.3 | 16 | 22 | 56 |
| GE 17 FW | 17 | 35 | 20 | 12 | 21 | 29 | 0.3 | 0.3 | 19 | 31 | 78 |
| GE 20 FW | 20 | 42 | 25 | 16 | 24 | 35.5 | 0.3 | 0.3 | 17 | 51 | 127 |
| GE 25 FW | 25 | 47 | 28 | 18 | 29 | 40.7 | 0.6 | 0.6 | 17 | 65 | 166 |
| GE 30 FW | 30 | 55 | 32 | 20 | 34 | 47 | 0.6 | 0.6 | 17 | 83 | 212 |